

BY-LAW # T-221.9

A BY-LAW IN AMENDMENT OF A BY-LAW RELATING TO THE STOPPING UP AND CLOSING OF HIGHWAYS WITHIN THE CITY OF MONCTON

BE IT ENACTED by the City Council of the City of Moncton as follows:

A By-Law Relating to the Stopping Up and Closing of Highways within the City of Moncton, being by-law # T-221, made and passed on August 16, 2021, is hereby amended as follows:

1 Schedule "A" "Permanently Closed Highways Description" is amended by adding the following in alphanumerical order:

(a) That "PARCEL 25-A 191.8 m²," being a portion of **Argyle Street** shown on a Survey Plan entitled "SURVEY PLAN TO ACCOMPANY STOP UP AND CLOSE OF A PORTION OF ARGYLE STREET, OWNER: CITY OF MONCTON, NORTH OF ARGYLE STREET, CITY OF MONCTON, PARISH OF MONCTON, COUNTY OF WESTMORLAND, PROVINCE OF NEW BRUNSWICK," prepared by Kim Labrie, N.B.L.S. and dated November 14, 2025, attached hereto as Schedule "AJ" is hereby permanently closed to all forms of traffic.

2 "Record of permanently and temporarily closed Highways" Table in Schedule "C" is amended by adding a row at the end of the Table, and in that new row:

- a)** adding "T-221.9" in the "Amending By-law" column;
- b)** adding "Argyle Street" in the "Location" column;
- c)** adding the date of the third reading by Council on this By-Law in the "Date Adopted" column;
- d)** adding "Permanent" in the "Closure Period" column;
- e)** adding "Survey Plan as presented and assented to by Council" in the "Adopted as per Survey Plan or Metes and Bounds" column.

MADE AND PASSED _____, 2025.

First Reading:
Second Reading:
Third Reading:

ARRÊTÉ N° T-221.9

ARRÊTÉ PORTANT MODIFICATION DE L'ARRÊTÉ CONCERNANT LA FERMETURE DE ROUTES DANS LA VILLE DE MONCTON

Le conseil municipal de Moncton édicte :

L'Arrêté concernant la fermeture de routes dans la ville de Moncton, soit l'arrêté n° T-221, pris et adopté le 16 août 2021, est modifié ainsi :

1 L'annexe A « Description des routes fermées en permanence » est modifié par adjonction de ce qui suit en ordre alphanumérique:

(a) la parcelle désignée « PARCEL 25-A 191.8 m² », soit un tronçon de la **rue Argyle** dont les limites sont indiquées sur un plan d'arpentage intitulé « SURVEY PLAN TO ACCOMPANY STOP UP AND CLOSE OF A PORTION OF ARGYLE STREET, OWNER: CITY OF MONCTON, NORTH OF ARGYLE STREET, CITY OF MONCTON, PARISH OF MONCTON, COUNTY OF WESTMORLAND, PROVINCE OF NEW BRUNSWICK », préparé par Kim Labrie, A.-G.N.-B., daté du 14 novembre 2025 et ci-joint en tant qu'annexe « AJ », est fermée en permanence à toute circulation.

2. L'annexe C « Registre des routes fermées en permanence et temporairement » est modifié par insertion d'une ligne à la fin du tableau et, dans cette nouvelle ligne :

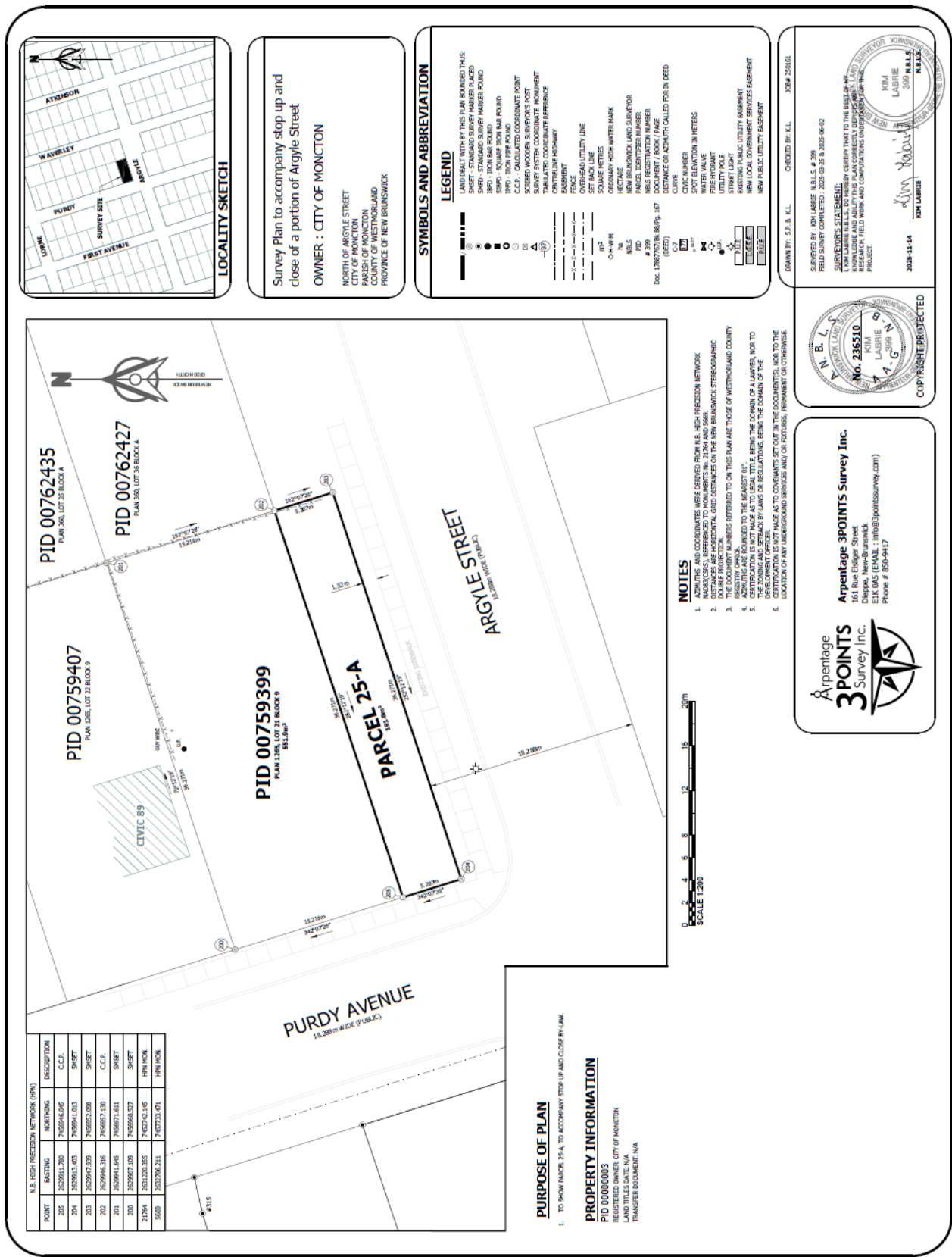
- a)** par insertion de « T-221.9 » dans la colonne « *Arrêté modificateur* »;
- b)** par insertion de « *rue Argyle* » dans la colonne « *Emplacement* »;
- c)** par insertion de la date de la troisième lecture par le conseil municipal dans la colonne « *Date d'adoption* »;
- d)** par insertion de « *Permanente* » dans la colonne « *Période de fermeture* »;
- e)** par insertion de « *Plan d'arpentage présenté au conseil municipal et approuvé par ce dernier* » dans la colonne « *Adopté sur le fondement d'un plan d'arpentage ou d'une description technique* ».

PRIS ET ADOPTÉ le _____ 2025.

Première lecture :
Deuxième lecture :
Troisième lecture :

Deputy Mayor/Mairesse adjointe

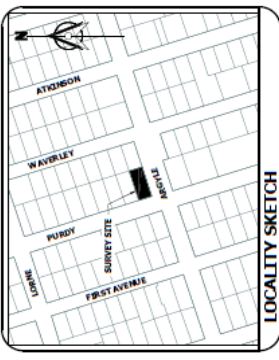
City Clerk/Greffière



POINT	Bearing	NOTATIONS	DESCRIPTION
205	2629411.280	745894.06	C.C.P.
204	2629413.403	745894.033	SHFIT
203	2629417.239	7458971.006	SHFIT
202	2629416.316	7458971.338	C.C.P.
201	2629411.645	7458971.611	SHFIT
200	2629007.006	7458960.037	SHFIT
21784	2633203.255	7462742.145	SPIN MARK
2588	262798.211	7467254.471	SPIN MARK

PURPOSE OF PLAN
 1. TO SHOW PARCEL 25-A, TO ACCOMPANY STOP UP AND CLOSE BY LAW.

PROPERTY INFORMATION
 PID 000759399
 PLAN 1255, LOT 25 BLOCK 9
 LAND TILES DATE: N/A
 TRANSFER DOCUMENT: N/A



Survey Plan to accompany stop up and close of a portion of Argyle Street
 OWNER : CITY OF MONCTON
 NORTH OF ARGYLE STREET
 CITY OF MONCTON
 PARISH OF MONCTON
 COUNTY OF WESTMIDLAND
 PROVINCE OF NEW BRUNSWICK

SYMBOLS AND ABBREVIATION

LEGEND

- LAND DEALT WITH BY THIS PLAN BOUNDED THERE BY THE SURVEYED BOUNDARIES AND SHOWN BY THE SHED
- SHED - STANDARD SURVEY MARKER ROUND
- SBFO - IRON BAR FOUND
- SBFO - SQUARE IRON BAR FOUND
- SBFO - SQUARE IRON BAR FOUND
- C.C.P. - CALCULATED COORDINATE POINT
- SCORER WOODEN SURVEYOR'S POST
- SURVEY SYSTEM COORDINATE MONUMENT
- PARISH COORDINATE MONUMENT
- PROVINCE COORDINATE REFERENCE MONUMENT
- FRANCE
- OVERHEAD UTILITY LINE
- CONCRETE UTILITY LINE
- SQUARE METRES
- COGNOMY HIGH WATER MARK
- HECTARE
- BACKSIGHT LAND SURVEYOR
- PARKER IDENTIFIER NUMBER
- N.B.S. REGISTRATION NUMBER
- N.B.S. REGISTRATION NUMBER
- DOCUMENT / BOOK / PAGE
- DATE OF ADJUSTMENT CALLED FOR IN BEED
- CIVIC NUMBER
- SPOT ELEVATION IN METERS
- WATER VALVE
- UTILITY POLE
- STREET LIGHT
- EXISTING PUBLIC UTILITY FACILITY
- NEW PUBLIC UTILITY FACILITY
- NEW PUBLIC UTILITY FACILITY

DRAWN BY: SP. & K.L. CHECKED BY: K.L. X38P 2581L

SUBMITTED BY: JOHN LARBE, N.B.S. # 399
 FIELD SURVEY COMPLETED: 2025-05-15 & 2025-06-03

SURVEYOR'S STATEMENT:
 I, JOHN LARBE, N.B.S. # 399, HEREBY CERTIFY THAT TO THE BEST OF MY KNOWLEDGE AND ABILITY THIS PLAN CORRECTLY REPRESENTS THE LAND SURVEYED AND THAT I HAVE CONDUCTED THE NECESSARY RESEARCH, FIELD WORK AND COMPUTATIONS UNDERSTANDING THE PROJECT.

2025-11-14
 JOHN LARBE
 N.B.S. # 399

W.A.B.L.S.
 WESTMIDLAND ASSOCIATION OF BOUNDARY LAND SURVEYORS
 No. 236510
 LARBE
 A.G. 308

COPYRIGHT PROTECTED

Arpentage 3POINTS Survey Inc.
 161 Rue Estager Street
 Dieppe, New-Brunswick
 E1K 0A5 (EMAIL : info@3pointssurvey.com)
 Phone # 506-9417

NOTES

- ADJUSTMENTS AND COORDINATES WERE DERIVED FROM N.B.S. HIGH PRECISION NETWORK MARKERS (SPOTS) REFERENCED TO MONUMENTS IN 21784 AND 2588.
- ADJUSTMENTS WERE MADE TO THE COORDINATE DATA USING THE NEW BRUNSWICK STEREOGRAPHIC DOUBLE PROJECTION.
- THE DOCUMENT NUMBERS REFERRED TO ON THIS PLAN ARE THOSE OF WESTMIDLAND COUNTY.
- ADJUSTMENTS WERE MADE TO THE COORDINATE DATA USING THE COORDINATE MONUMENTS IN 21784 AND 2588.
- ADJUSTMENTS WERE MADE TO THE COORDINATE DATA USING THE COORDINATE MONUMENTS IN 21784 AND 2588.
- ADJUSTMENTS WERE MADE TO THE COORDINATE DATA USING THE COORDINATE MONUMENTS IN 21784 AND 2588.