

**BY-LAW # T-221.8****A BY-LAW IN AMENDMENT OF A BY-LAW RELATING TO THE STOPPING UP AND CLOSING OF HIGHWAYS WITHIN THE CITY OF MONCTON**

BE IT ENACTED by the City Council of the City of Moncton as follows:

A By-Law Relating to the Stopping Up and Closing of Highways within the City of Moncton, being by-law # T-221, made and passed on August 16, 2021, is hereby amended as follows:

1 Schedule "A" "Permanently Closed Highways Description" is amended by adding the following in alphanumerical order:

(a) That "LOT 25-A (PROMENADE LEE DRIVE) 44 m<sup>2</sup>," being a portion of **Lee Drive** shown on a Survey Plan entitled "PLAN OF SURVEY PROMENADE LEE DRIVE, SITUTATED ON THE WEST SIDE OF CERCLE AUBURN CIRCLE, CITY OF MONCTON, PARISH OF MONCTON, COUNTY OF WESTMORLAND, PROVINCE OF NEW BRUNSWICK" prepared by Brandon M. MacDonald, N.B.L.S. and dated November 19, 2025, attached hereto as Schedule "A1" is hereby permanently closed to all forms of traffic.

2 "Record of permanently and temporarily closed Highways" Table in Schedule "C" is amended by adding a row at the end of the Table, and in that new row:

a) adding "T-221.8" in the "Amending By-law" column;

b) adding "Lee Drive" in the "Location" column;

c) adding the date of the third reading by Council on this By-Law in the "Date Adopted" column;

d) adding "Permanent" in the "Closure Period" column;

e) adding "Survey Plan as presented and assented to by Council" in the "Adopted as per Survey Plan or Metes and Bounds" column.

**ARRÊTÉ N° T-221.8****ARRÊTÉ PORTANT MODIFICATION DE L'ARRÊTÉ CONCERNANT LA FERMETURE DE ROUTES DANS LA VILLE DE MONCTON**

Le conseil municipal de Moncton édicte :

L'Arrêté concernant la fermeture de routes dans la ville de Moncton, soit l'arrêté n° T-221, pris et adopté le 16 août 2021, est modifié ainsi :

1 L'annexe A « Description des routes fermées en permanence » est modifié par adjonction de ce qui suit en ordre alphanumérique:

(a) la parcelle désignée « LOT 25-A (PROMENADE LEE DRIVE) 44 m<sup>2</sup> », soit un tronçon de la **Promenade Lee** dont les limites sont indiquées sur un plan d'arpentage intitulé « PLAN OF SURVEY PROMENADE LEE DRIVE, SITUTATED ON THE WEST SIDE OF CERCLE AUBURN CIRCLE, CITY OF MONCTON, PARISH OF MONCTON, COUNTY OF WESTMORLAND, PROVINCE OF NEW BRUNSWICK », préparé par Brandon M. MacDonald, A.-G.N.-B., daté du 19 novembre 2025 et ci-joint en tant qu'annexe « A1 », est fermée en permanence à toute circulation.

2 L'annexe C « Registre des routes fermées en permanence et temporairement » est modifié par insertion d'une ligne à la fin du tableau et, dans cette nouvelle ligne :

a) par insertion de « T-221.8 » dans la colonne « *Arrêté modificateur* »;

b) par insertion de « Promenade Lee » dans la colonne « *Emplacement* »;

c) par insertion de la date de la troisième lecture par le conseil municipal dans la colonne « *Date d'adoption* »;

d) par insertion de « *Permanente* » dans la colonne « *Période de fermeture* »;

e) par insertion de « *Plan d'arpentage présenté au conseil municipal et approuvé par ce dernier* » dans la colonne « *Adopté sur le fondement d'un plan d'arpentage ou d'une description technique* ».

**MADE AND PASSED** \_\_\_\_\_, 2025.

First Reading:  
Second Reading:  
Third Reading:

**PRIS ET ADOPTÉ** le \_\_\_\_\_ 2025.

Première lecture :  
Deuxième lecture :  
Troisième lecture :

\_\_\_\_\_  
*Deputy Mayor/Mairesse adjointe*

\_\_\_\_\_  
*City Clerk/Greffière*

CURVE TABLE

CURVE	RADIUS POINT	RADIUS	ARC	CHORD	AZIMUTH
C1	615	15.240	23.083	20.939	208°15'49"

**LEGEND**

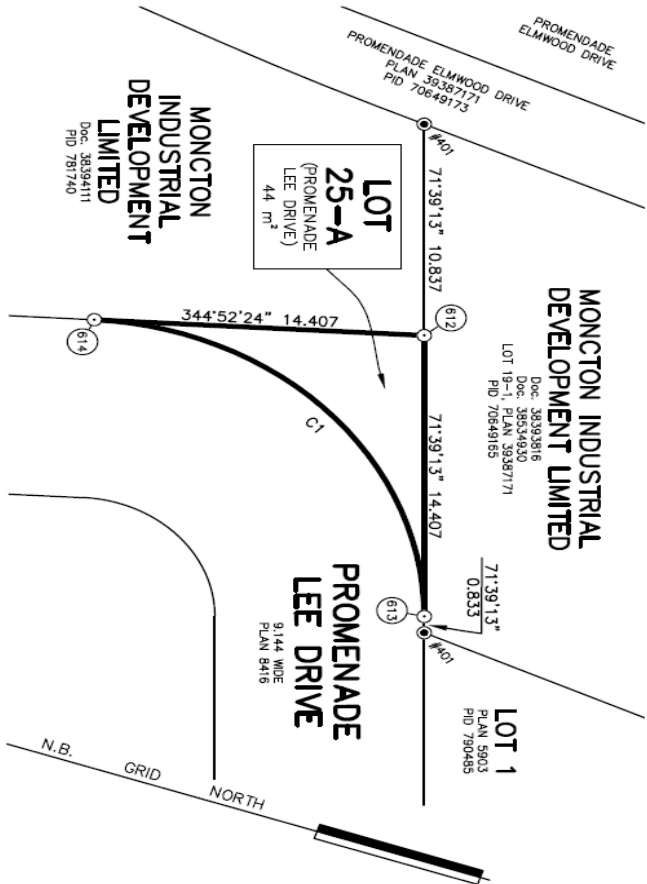
- ▲ SURVEY SYSTEM COORDINATE MONUMENT
- STANDARD SURVEY MARKER PLACED
- STANDARD SURVEY MARKER FOUND
- CALCULATED COORDINATE POINT
- IRON PIPE FOUND
- ROUND IRON BAR FOUND
- TABULATED COORDINATE REFERENCE
- UTILITY POLE
- NEW BRUNSWICK LAND SURVEYOR
- N.B.S. REGISTRATION NUMBER #372
- MUNICIPAL SERVICES EASEMENT
- PUBLIC UTILITY EASEMENT
- DOCUMENT
- VOLUME
- PAGE
- SQUARE METRES
- SERVICE NEW BRUNSWICK
- REFERENCE
- OVERHEAD LINE(S)
- CERTIFICATE OF REGISTERED OWNERSHIP
- SERVICE NEW BRUNSWICK PARCEL IDENTIFIER
- EASEMENT(S) SHOWN THIS LAND DEALT WITH BY THIS PLAN BOUNDED THIS

**NOTE**

- DIRECTIONS ARE N.B. GRID AZIMUTHS DERIVED FROM THE SERVICE NEW BRUNSWICK'S HIGH PRECISION NETWORK ACTIVE CONTROL SYSTEM.
- THE SCALE FACTOR USED WAS 1.000027.
- THE DOCUMENT NUMBERS REFERRED TO ON THIS PLAN ARE THOSE OF THE COUNTY REGISTRY OFFICE.
- ADJACENT OWNER INFORMATION OBTAINED FROM S.N.B. RECORDS
- ALL DISTANCES SHOWN ARE CALCULATED GRID DISTANCES.
- LEGAL TITLE WAS NOT REVIEWED, BEING THE DOMAIN OF A LAWYER, NOR TO THE ZONING & SETBACK BY-LAWS OR REGULATIONS, BEING THE DOMAIN OF A DEVELOPMENT OFFICER.
- COVENANTS SET OUT IN THE DOCUMENT(S) WERE NOT CONSIDERED.
- FIELD SURVEY WAS COMPLETED, 2025.

**PURPOSE OF PLAN**

- TO ILLUSTRATE A PORTION OF PROMENADE LEE DRIVE, LOT 25-A, TO STOP UP AND CLOSE.



612	2633654.448	7459722.534
613	2633668.123	7459727.069
614	2633658.208	7459708.626
615	2633672.919	7459712.603
Δ 28155	2628800.997	7458492.126
STATION	EASTING	NORTHING

**N.B. GRID COORDINATE VALUES**

ALL COMPUTATIONS PERFORMED AND COORDINATES SHOWN ON THIS PLAN ARE BASED ON THE NEW BRUNSWICK STEREOGRAPHIC DOUBLE PROJECTION AND NAD83 (CSRS) AS REALIZED BY SERVICE NEW BRUNSWICK'S HIGH PRECISION NETWORK ACTIVE CONTROL SYSTEM

**PROMENADE LEE DRIVE**

PLAN OF SURVEY  
SITUATED ON THE WEST SIDE OF CERCLE AUBURN CIRCLE, CITY OF MONCTON, PARISH OF MONCTON, COUNTY OF WESTMORLAND, PROVINCE OF NEW BRUNSWICK



1070 ST. GEORGE BOULEVARD, SUITE 180  
MONCTON, NEW BRUNSWICK  
CANADA, E1E 4K7  
PHONE: 506 857-1675  
WWW.WSP.COM

NEW BRUNSWICK LAND SURVEYOR  
#381  
BRANDON V. MacDONALD  
SIGNATURE  
DATE 2025-11-19  
APPRENTICE-REÇEVEUR DU NOUVEAU-BRUNSWICK

A. N. B. L. S.  
No. 236580  
A-A-G-N-B

DRAWN:	NJB	FIELD:	CWM	CHECKED:	BMJ
JOB:	CA0044986	CAD:	CA0044986-610		